

NOTES

AUDITORIUM
 Size 13.6m (44'6") x 9.2m (30')
 Front half each row stepped 1 in 5.5
 Back half each row stepped 1 in 3.3

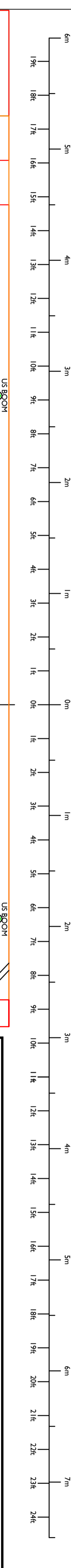
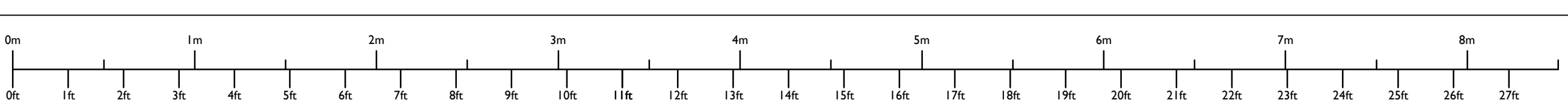
GRID
 Height 1.2m (3'9") to underside
 Maximum flying height 11.4m (37'5")
 Hems A-D flying height 7.75m (25'5")

STAGE SIZE
 Proscenium Arch Height 3.8m (12'5")
 Proscenium Arch Width 6.67m (21'10")
 Maximum Stage Depth 11.1m (36'5")

FORESTAGE
 Two 2', four 4' (interchangeable) and 2 curved sections, can be lowered by 0.57m (1'10") max.
 Steps available with 0.17m (6.75") risers.

GET IN DOORS AND TRAPS
 Get-in doors 1.14m x 2.19m (3'8" x 7'2") or 0.76m x 2.04m (2'6" x 6'8"). Staircase should be checked if large pieces of scenery are to be used
 Traps to scene dock below stage, aperture 3.55m x 1.03m (11'7" x 3'4")

ORCHESTRA PIT
 Depth 1.6m (5'3") below stage
 Depth 0.8m (2'9") below auditorium
 Useful width 1.55m (5'1")



adc theatre

PARK STREET - CAMBRIDGE CB5 8AS - TELEPHONE (01223) 359547 - WEBSITE <http://www.adc.theatre.com>

STAGE PLAN SCALE 1:25 (A1) 1:50 (A3)

PRODUCTION	DATES	
	COMPANY	
DIRECTOR	DESIGNER	
LIGHTING DESIGNER	DRAWN	DATE

ADC CAD Model maintained by Eddy Langley - <http://eddylangley.net/adc/> - Last updated: Saturday August 22 2020

STAIRS TO YARD

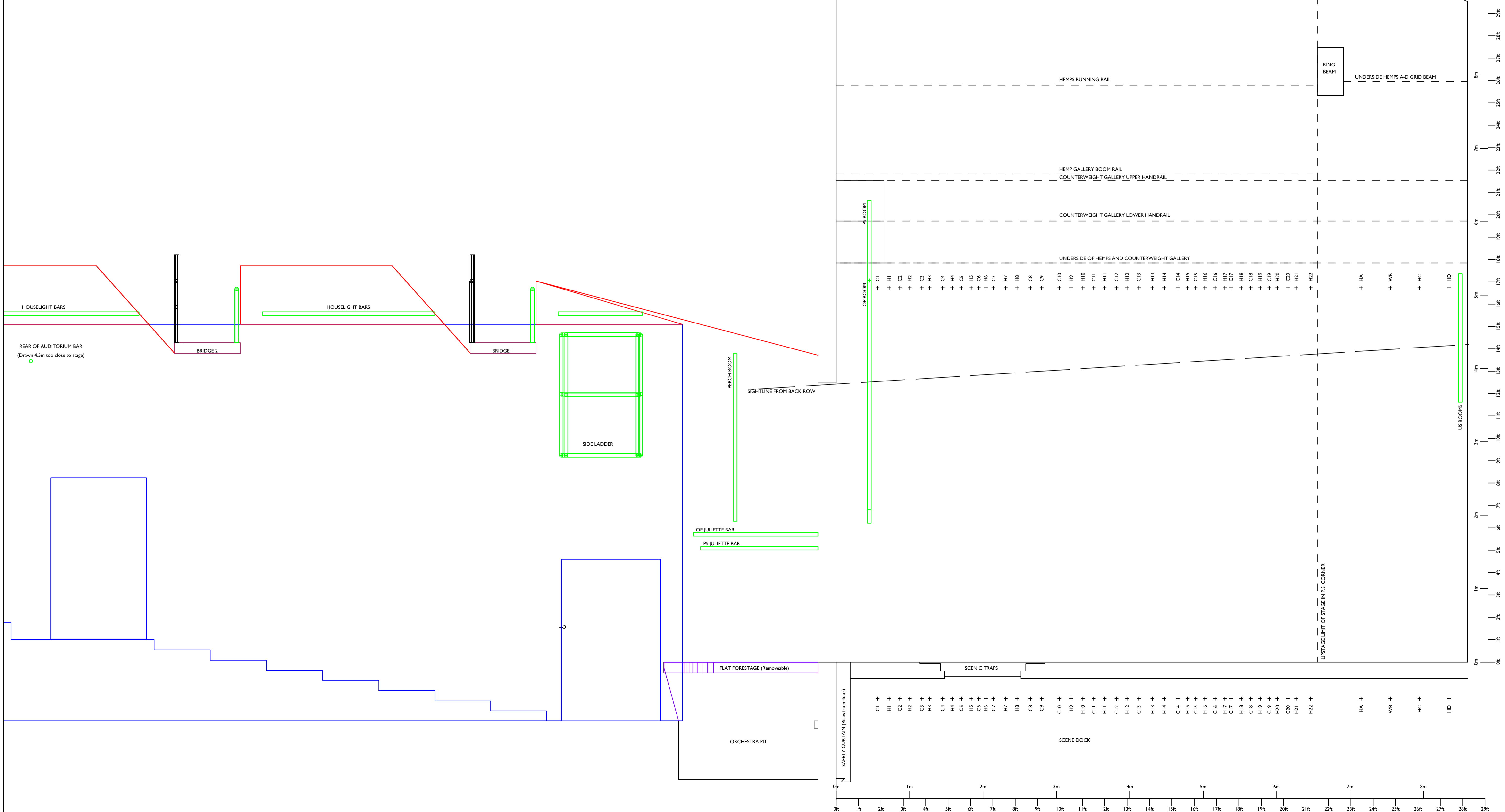
LIFT



PARK STREET - CAMBRIDGE CB5 8AS - TELEPHONE (01223) 359547 - WEBSITE <http://www.adctheatre.com>

STAGE SECTION		SCALE 1:25 (A1) 1:50 (A3)	
PRODUCTION	DATES		
	COMPANY		
DIRECTOR	DESIGNER		
LIGHTING DESIGNER	DRAWN	DATE	

ADC CAD Model maintained by Eddy Langley - <http://eddylangley.net/adcl> - Last updated: Saturday August 22 2020



UNDERSIDE OF GRID BEAMS	
LIMIT OF COUNTERWEIGHT FLYING BARS	
+ C1	+ H1
+ C2	+ H2
+ C3	+ H3
+ C4	+ H4
+ C5	+ H5
+ C6	+ H6
+ C7	+ H7
+ C8	+ H8
+ C9	+ H9
+ C10	+ H10
+ C11	+ H11
+ C12	+ H12
+ C13	+ H13
+ C14	+ H14
+ C15	+ H15
+ C16	+ H16
+ C17	+ H17
+ C18	+ H18
+ C19	+ H19
+ C20	+ H20
+ C21	+ H21
+ C22	+ H22
+ HA	+ WB
+ HC	+ HD



PARK STREET - CAMBRIDGE CB5 8AS - TELEPHONE (01223) 359547 - WEBSITE <http://www.adctheatre.com>

FRONT ELEVATION SCALE 1:25 (A1) 1:50 (A3)

PRODUCTION	DATES	
	COMPANY	
DIRECTOR	DESIGNER	
LIGHTING DESIGNER	DRAWN	DATE

ADC CAD Model maintained by Eddy Langley - <http://eddylangley.net/adc/> - Last updated: Saturday August 22 2020

NOTES

AUDITORIUM

Size 13.6m (44'6") x 9.2m (30')
 Front half each row stepped 1 in 5.5
 Back half each row stepped 1 in 3.3

GRID

Height 12m (39'4") to underside
 Maximum flying height 11.4m (37'5")
 Hemps A-D flying height 7.75m (25'5")

STAGE SIZE

Proscenium Arch Height 3.8m (12'5")
 Proscenium Arch Width 6.67m (21'10")
 Maximum Stage Depth 11.1m (36'5")

FORESTAGE

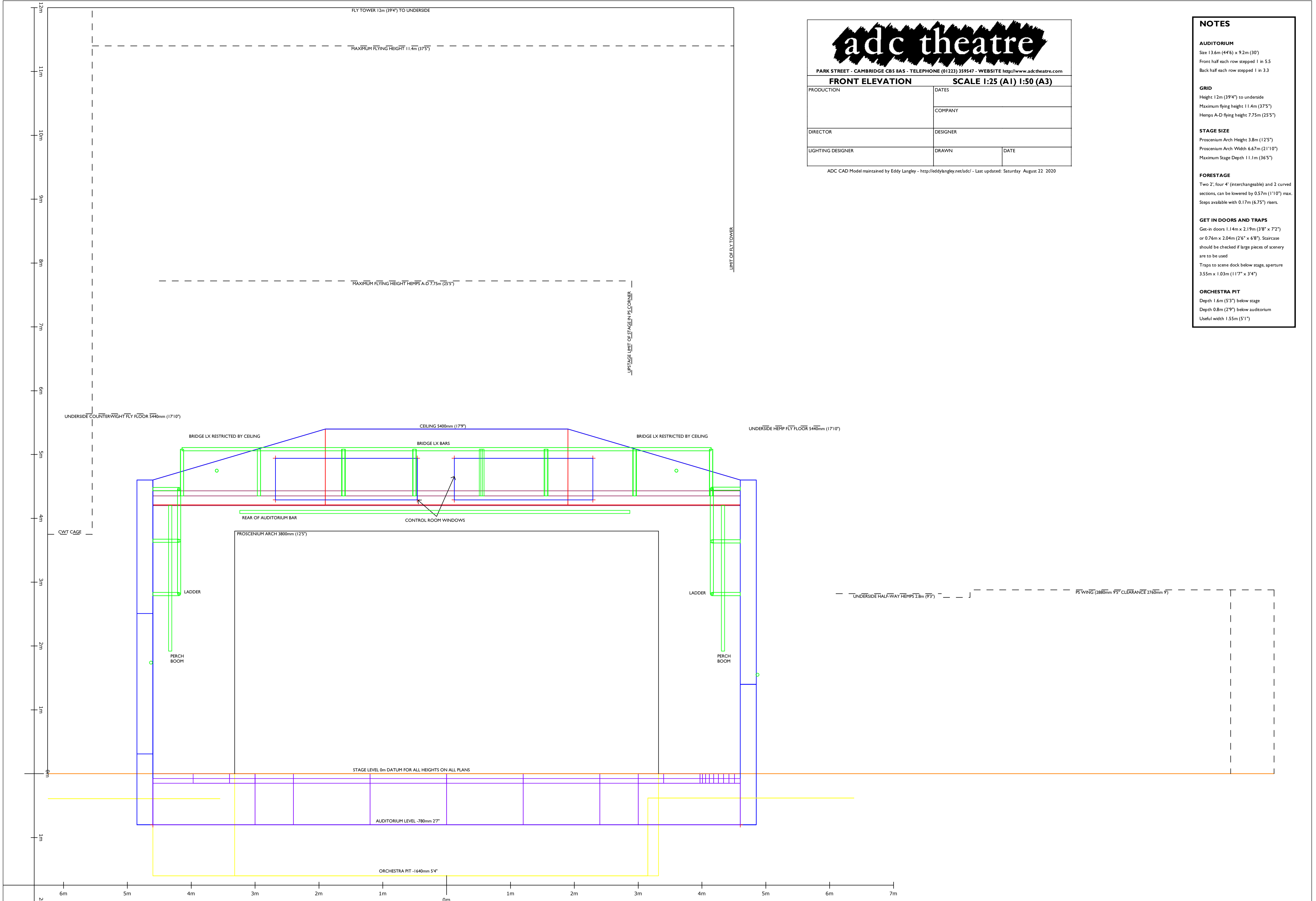
Two 2', four 4' (interchangeable) and 2 curved sections, can be lowered by 0.57m (1'10") max. Steps available with 0.17m (6.75") risers.

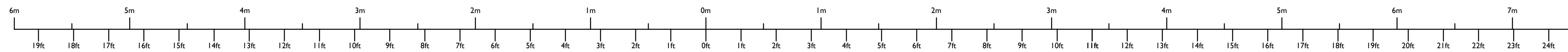
GET IN DOORS AND TRAPS

Get-in doors 1.14m x 2.19m (3'8" x 7'2") or 0.76m x 2.04m (2'6" x 6'8"). Staircase should be checked if large pieces of scenery are to be used
 Traps to scene dock below stage, aperture 3.55m x 1.03m (11'7" x 3'4")

ORCHESTRA PIT

Depth 1.6m (5'3") below stage
 Depth 0.8m (2'9") below auditorium
 Useful width 1.55m (5'1")



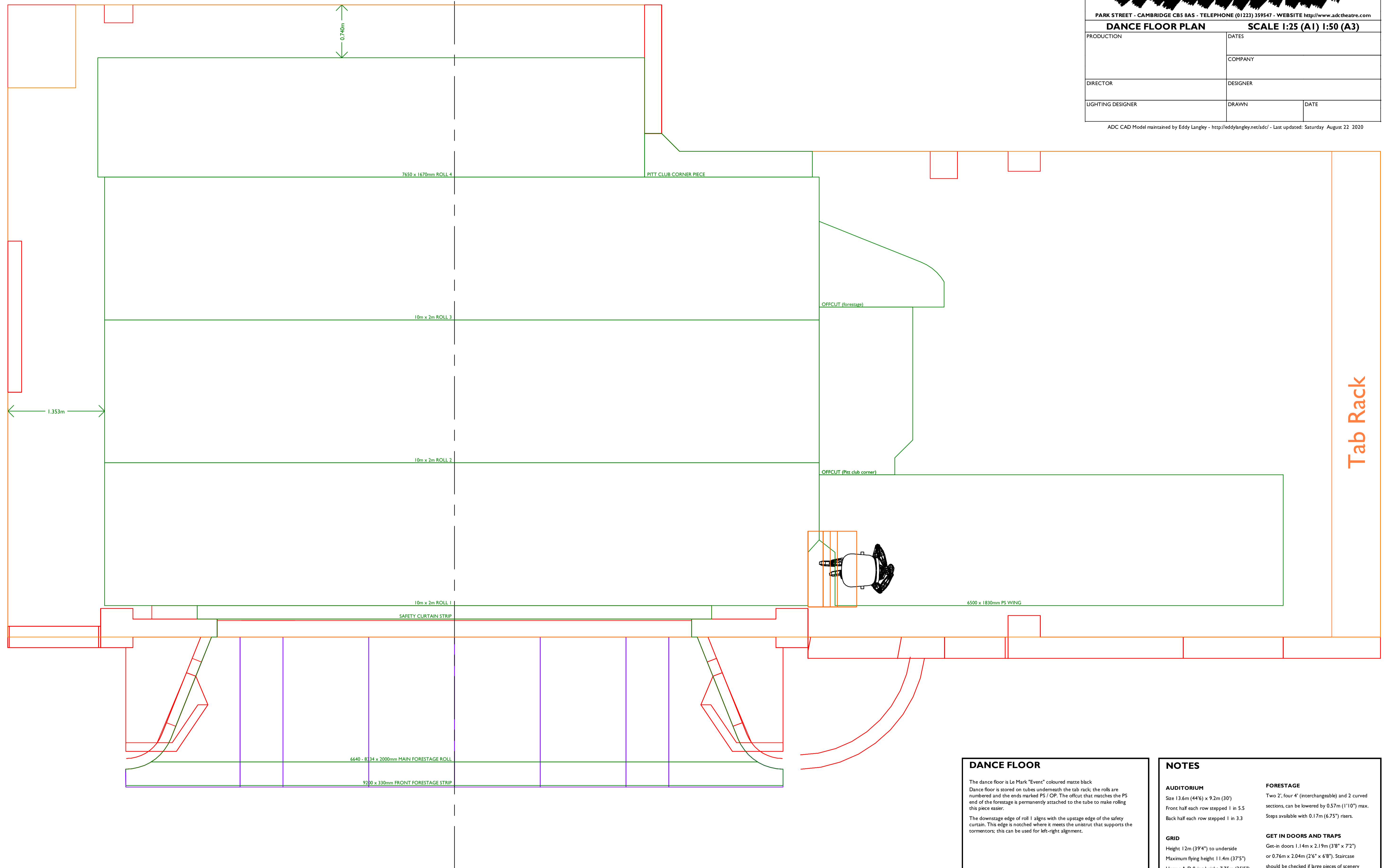


PARK STREET - CAMBRIDGE CB5 8AS - TELEPHONE (01223) 359547 - WEBSITE <http://www.adctheatre.com>

DANCE FLOOR PLAN SCALE 1:25 (A1) 1:50 (A3)

PRODUCTION	DATES	
	COMPANY	
DIRECTOR	DESIGNER	
LIGHTING DESIGNER	DRAWN	DATE

ADC CAD Model maintained by Eddy Langley - <http://eddylangley.net/adc/> - Last updated: Saturday August 22 2020



DANCE FLOOR

The dance floor is Le Mark "Event" coloured matte black.
 Dance floor is stored on tubes underneath the tab rack; the rolls are numbered and the ends marked PS / OP. The offcut that matches the PS end of the forestage is permanently attached to the tube to make rolling this piece easier.
 The downstage edge of roll 1 aligns with the upstage edge of the safety curtain. This edge is notched where it meets the unistrut that supports the tormentors; this can be used for left-right alignment.

NOTES

AUDITORIUM

Size 13.6m (44'6") x 9.2m (30')
 Front half each row stepped 1 in 5.5
 Back half each row stepped 1 in 3.3

GRID

Height 12m (39'4") to underside
 Maximum flying height 11.4m (37'5")
 Hems A-D flying height 7.75m (25'5")

STAGE SIZE

Proscenium Arch Height 3.8m (12'5")
 Proscenium Arch Width 6.67m (21'10")
 Maximum Stage Depth 11.1m (36'5")

FORESTAGE

Two 2', four 4' (interchangeable) and 2 curved sections, can be lowered by 0.57m (1'10") max. Steps available with 0.17m (6.75") risers.

GET IN DOORS AND TRAPS

Get-in doors 1.14m x 2.19m (3'8" x 7'2") or 0.76m x 2.04m (2'6" x 6'8"). Staircase should be checked if large pieces of scenery are to be used

Traps to scene dock below stage, aperture 3.55m x 1.03m (11'7" x 3'4")

ORCHESTRA PIT

Depth 1.6m (5'3") below stage
 Depth 0.8m (2'9") below auditorium
 Useful width 1.55m (5'1")

