

NOTES

AUDITORIUM
 Size 13.6m (44'6") x 9.2m (30')
 Front half each row stepped 1 in 5.5
 Back half each row stepped 1 in 3.3

GRID
 Height 1.2m (39'4") to underside
 Maximum flying height 11.4m (37'5")
 Hemps A-D flying height 7.75m (25'5")

STAGE SIZE
 Proscenium Arch Height 3.8m (12'5")
 Proscenium Arch Width 6.67m (21'10")
 Maximum Stage Depth 11.1m (36'5")

FORESTAGE
 Two 2', four 4' (interchangeable) and 2 curved sections, can be lowered by 0.57m (1'10") max.
 Steps available with 0.17m (6.75") risers.

GET IN DOORS AND TRAPS
 Get-in doors 1.14m x 2.19m (3'8" x 7'2") or 0.76m x 2.04m (2'6" x 6'8"). Staircase should be checked if large pieces of scenery are to be used
 Traps to scene dock below stage, aperture 3.55m x 1.03m (11'7" x 3'4")

ORCHESTRA PIT
 Depth 1.6m (5'3") below stage
 Depth 0.8m (2'9") below auditorium
 Useful width 1.55m (5'1")

adc theatre

PARK STREET - CAMBRIDGE CB5 8AS - TELEPHONE (01223) 359547 - WEBSITE <http://www.adc.theatre.com>

STAGE PLAN SCALE 1:25 (A1) 1:50 (A3)

PRODUCTION	DATES	
	COMPANY	
DIRECTOR	DESIGNER	
LIGHTING DESIGNER	DRAWN	DATE

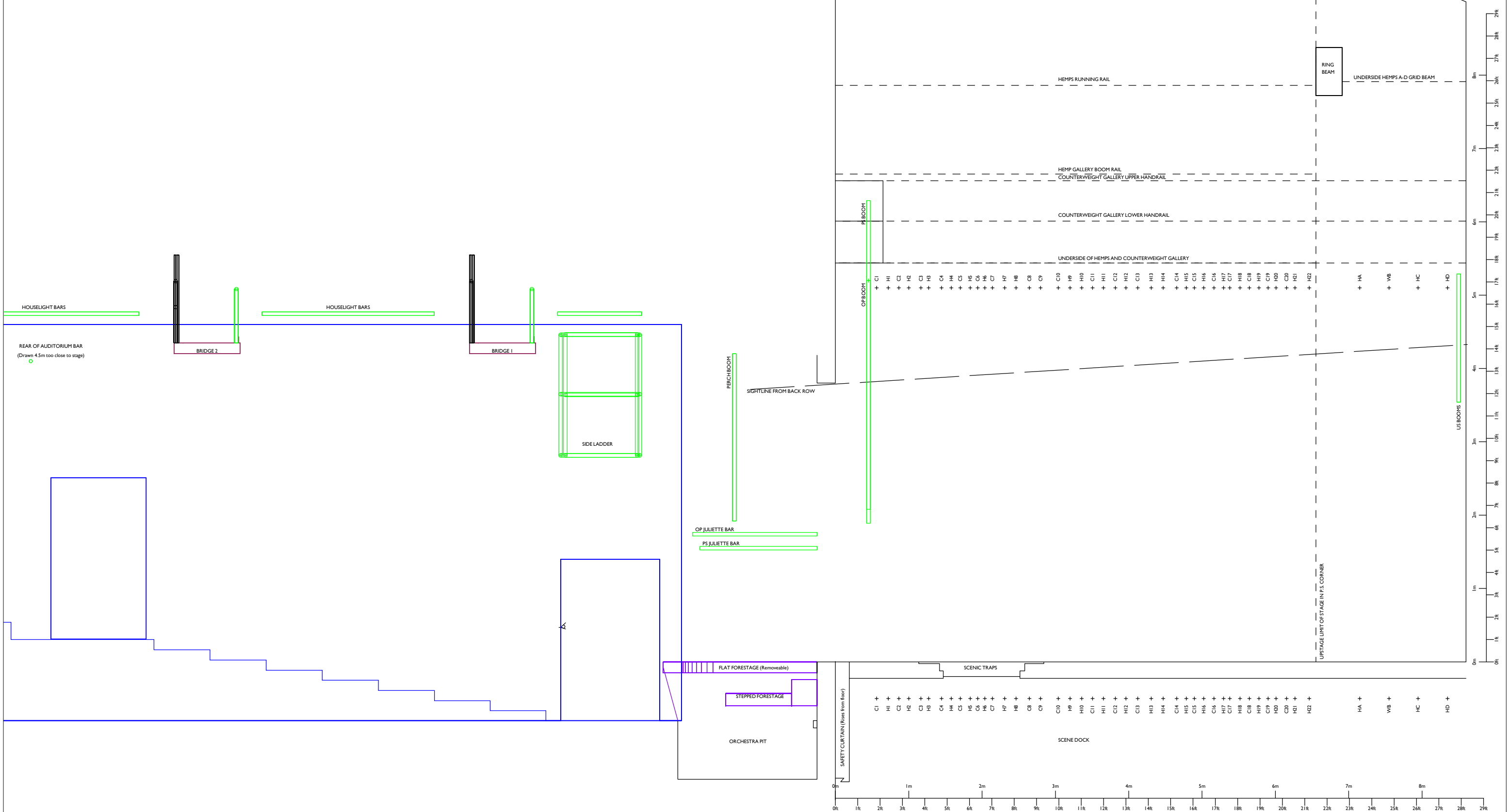
ADC CAD Model maintained by Eddy Langley - <http://www.eddylangley.net/adc/> - Last updated: Thursday April 14 2022



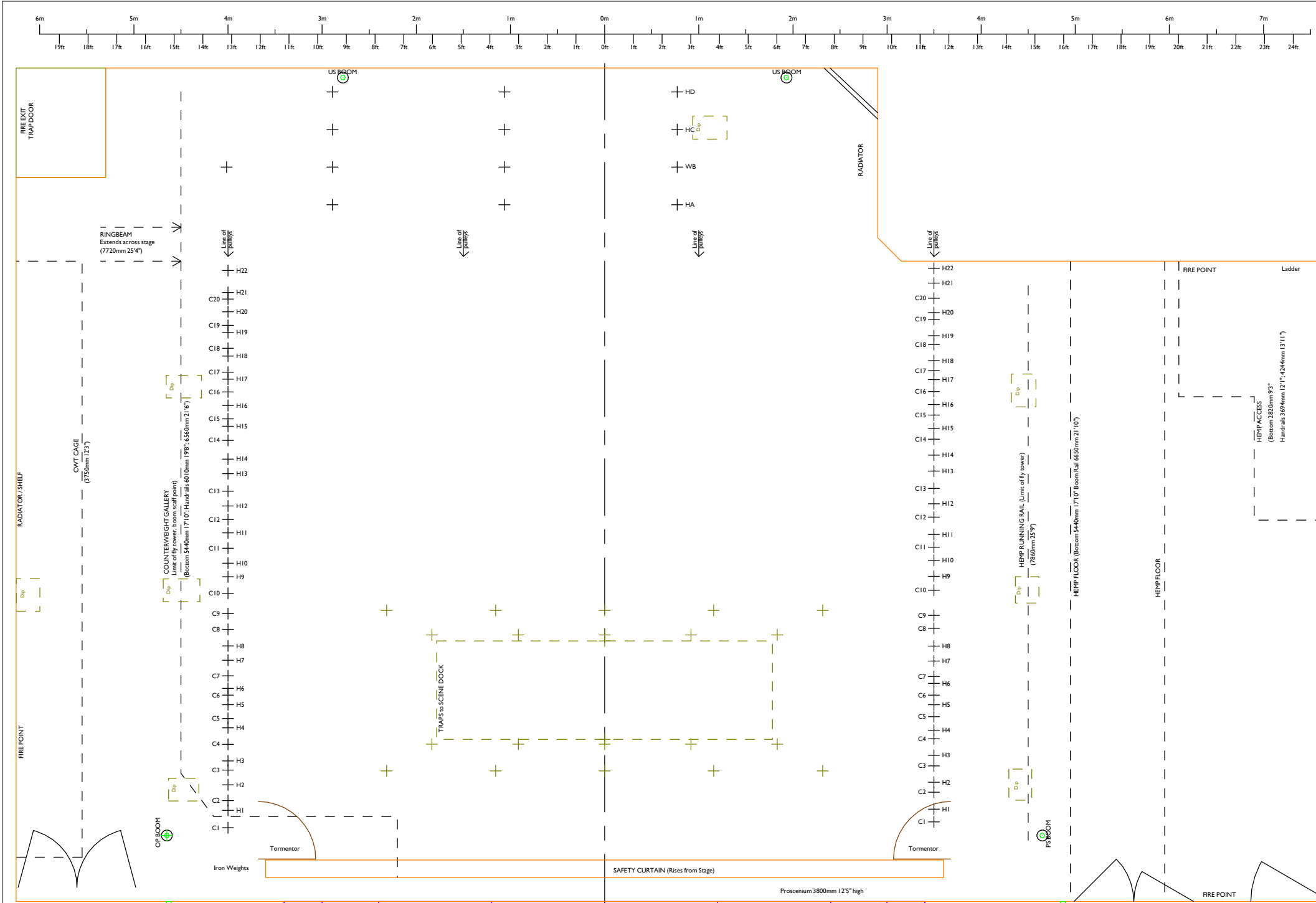
PARK STREET - CAMBRIDGE CB5 8AS - TELEPHONE (01223) 359547 - WEBSITE <http://www.adctheatre.com>

STAGE SECTION		SCALE 1:25 (A1) 1:50 (A3)	
PRODUCTION	DATES		
	COMPANY		
DIRECTOR	DESIGNER		
LIGHTING DESIGNER	DRAWN	DATE	

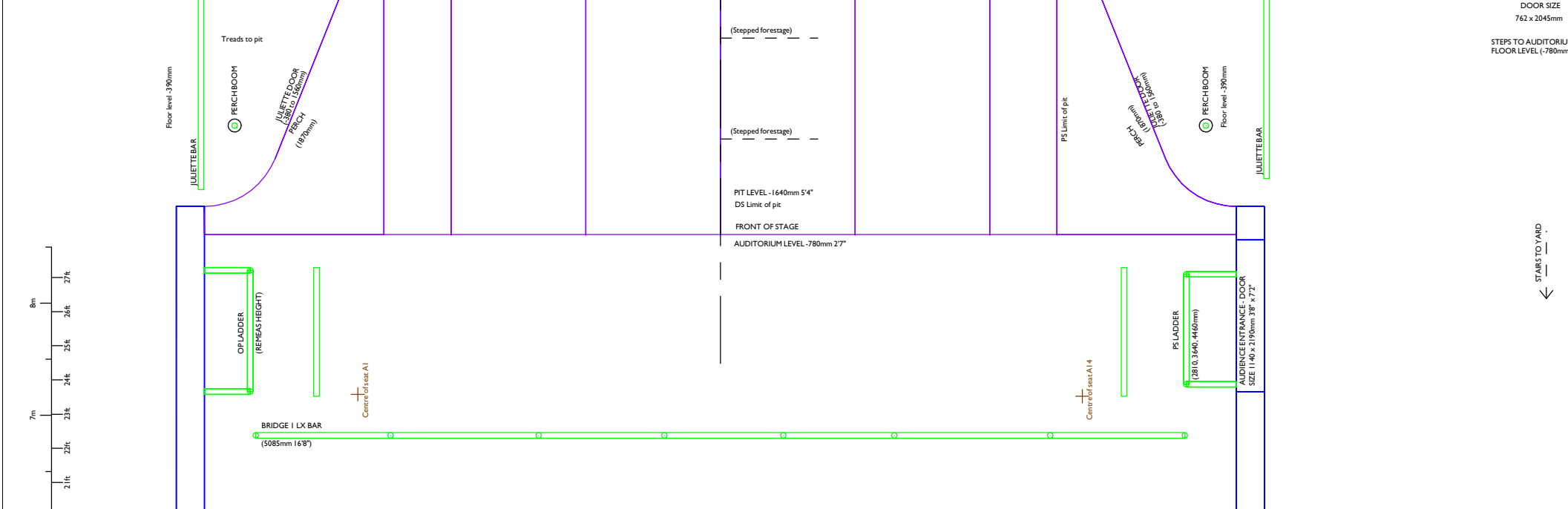
ADC CAD Model maintained by Eddy Langley - <http://www.eddylangley.net/adc/> - Last updated: Thursday April 14 2022



PRODUCTION	DATES	
	COMPANY	
DIRECTOR	DESIGNER	
LIGHTING DESIGNER	DRAWN	DATE



Tab Rack



NOTES

<p>AUDITORIUM Size 13.6m (44'6") x 9.2m (30') Front half each row stepped 1 in 5.5 Back half each row stepped 1 in 3.3</p>	<p>FORESTAGE Two 2', four 4' (interchangeable) and 2 curved sections, can be lowered by 0.57m (1'10") max. Steps available with 0.17m (6.75") risers.</p>
<p>GRID Height 12m (39'4") to underside Maximum flying height 11.4m (37'5") Herpps A-D flying height 7.75m (25'5")</p>	<p>GET IN DOORS AND TRAPS Get-in doors 1.14m x 2.19m (3'8" x 7'2") or 0.76m x 2.04m (2'6" x 6'8"). Staircase should be checked if large pieces of scenery are to be used Traps to scene dock below stage, aperture 3.55m x 1.03m (11'7" x 3'4")</p>
<p>STAGE SIZE Proscenium Arch Height 3.8m (12'5") Proscenium Arch Width 6.67m (21'10") Maximum Stage Depth 11.1m (36'5")</p>	<p>ORCHESTRA PIT Depth 1.6m (5'3") below stage Depth 0.8m (2'9") below auditorium Useful width 1.55m (5'1")</p>

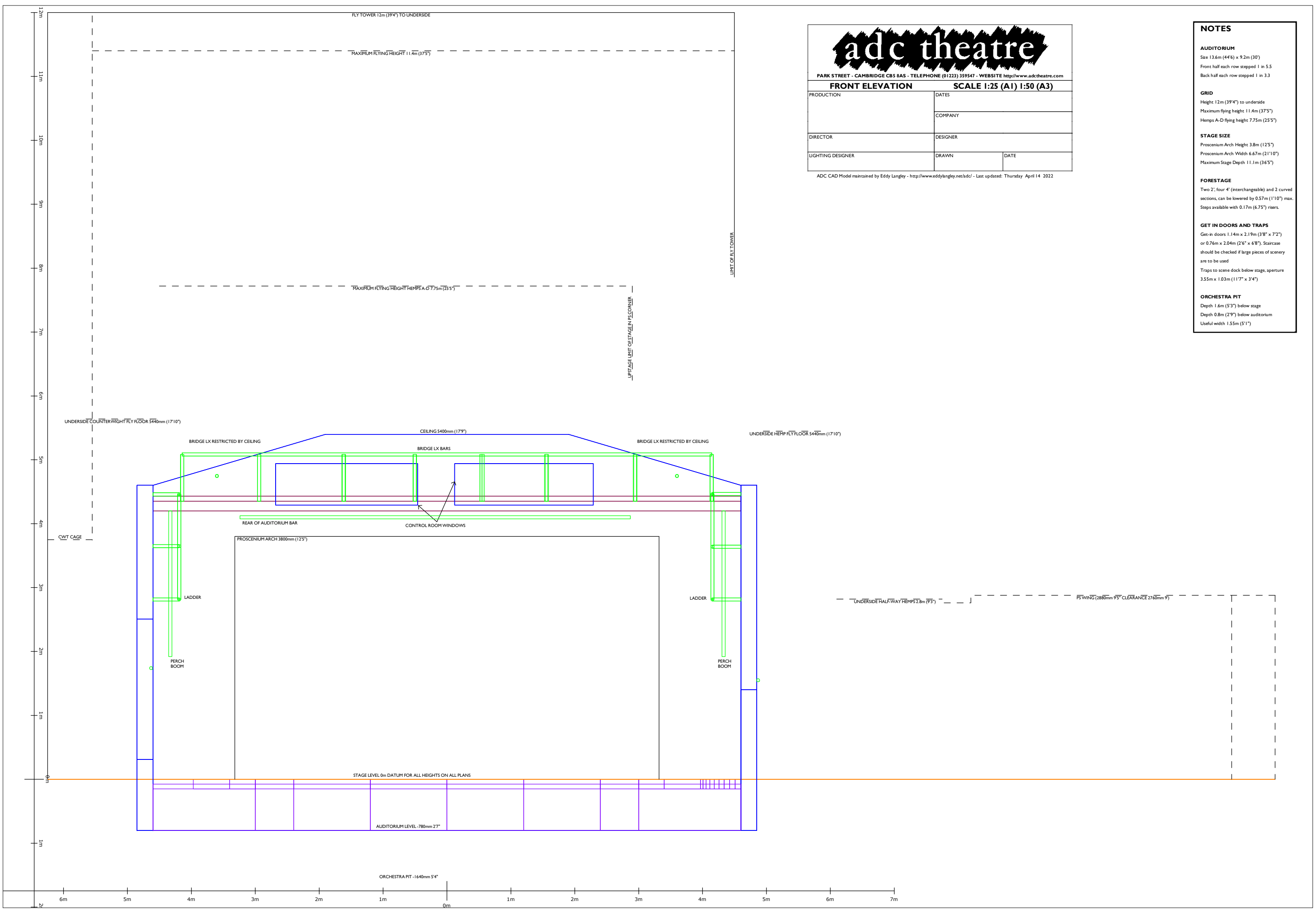


PARK STREET - CAMBRIDGE CB5 8AS - TELEPHONE (01223) 359547 - WEBSITE <http://www.adctheatre.com>

FRONT ELEVATION		SCALE 1:25 (A1) 1:50 (A3)	
PRODUCTION	DATES		
DIRECTOR	COMPANY		
LIGHTING DESIGNER	DESIGNER	DRAWN	DATE

ADC CAD Model maintained by Eddy Langley - <http://www.eddylangley.net/adcl/> - Last updated: Thursday April 14, 2022

NOTES	
AUDITORIUM	Size 13.6m (44'6") x 9.2m (30') Front half each row stepped 1 in 5.5 Back half each row stepped 1 in 3.3
GRID	Height 12m (39'4") to underside Maximum flying height 11.4m (37'5") Hemps A-D flying height 7.75m (25'5")
STAGE SIZE	Proscenium Arch Height 3.8m (12'5") Proscenium Arch Width 6.67m (21'10") Maximum Stage Depth 11.1m (36'5")
FORESTAGE	Two 2', four 4' (interchangeable) and 2 curved sections, can be lowered by 0.57m (1'10") max. Steps available with 0.17m (6.75") risers.
GET IN DOORS AND TRAPS	Get-in doors 1.14m x 2.19m (3'8" x 7'2") or 0.76m x 2.04m (2'6" x 6'8"). Staircase should be checked if large pieces of scenery are to be used Traps to scene dock below stage, aperture 3.55m x 1.03m (11'7" x 3'4")
ORCHESTRA PIT	Depth 1.6m (5'3") below stage Depth 0.8m (2'9") below auditorium Useful width 1.55m (5'1")



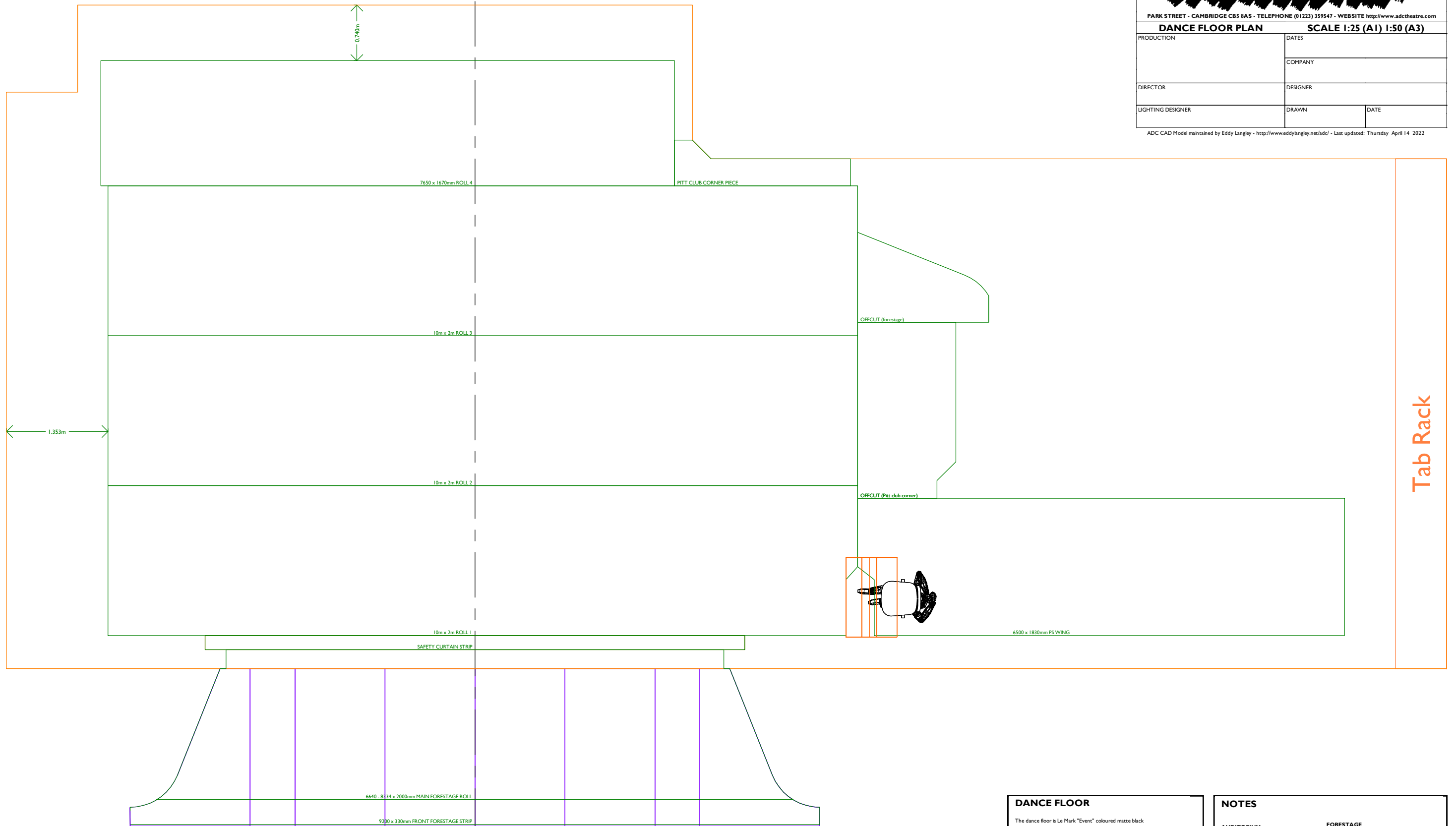


PARK STREET - CAMBRIDGE CB5 8AS - TELEPHONE (01223) 359547 - WEBSITE <http://www.adctheatre.com>

DANCE FLOOR PLAN SCALE 1:25 (A1) 1:50 (A3)

PRODUCTION	DATES	
	COMPANY	
DIRECTOR	DESIGNER	
LIGHTING DESIGNER	DRAWN	DATE

ADC CAD Model maintained by Eddy Langley - <http://www.eddykingley.net/adc/> - Last updated: Thursday April 14 2022



DANCE FLOOR

The dance floor is Le Mark "Event" coloured matte black

Dance floor is stored on tubes underneath the tab rack; the rolls are numbered and the ends marked PS / OP. The offcut that matches the PS end of the forestage is permanently attached to the tube to make rolling this piece easier.

The downstage edge of roll 1 aligns with the upstage edge of the safety curtain. This edge is notched where it meets the unstrut that supports the tormentors; this can be used for left-right alignment.

NOTES

AUDITORIUM
 Size 13.6m (44ft) x 9.2m (30ft)
 Front half each row stepped 1 in 5.5
 Back half each row stepped 1 in 3.3

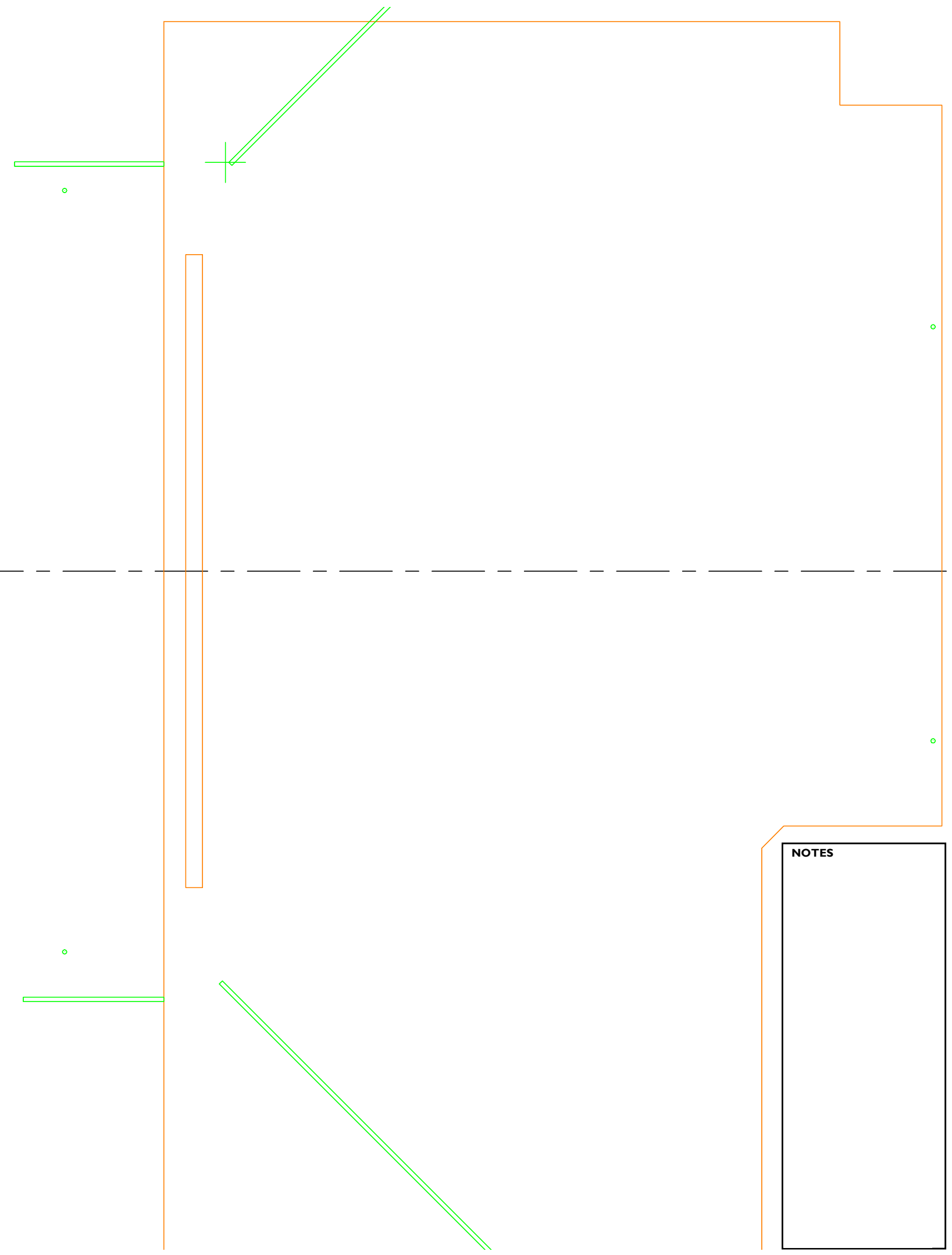
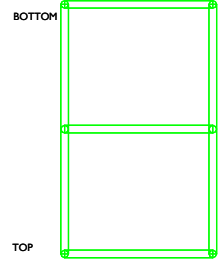
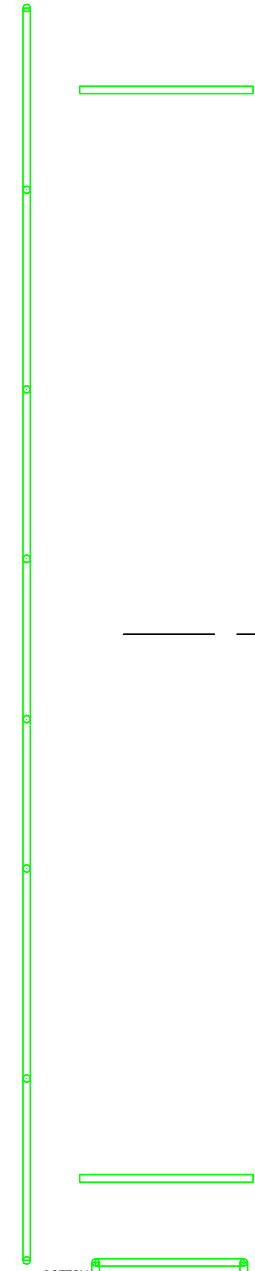
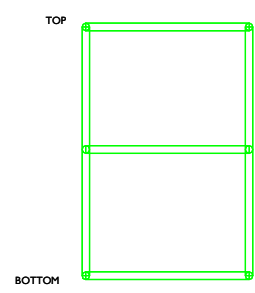
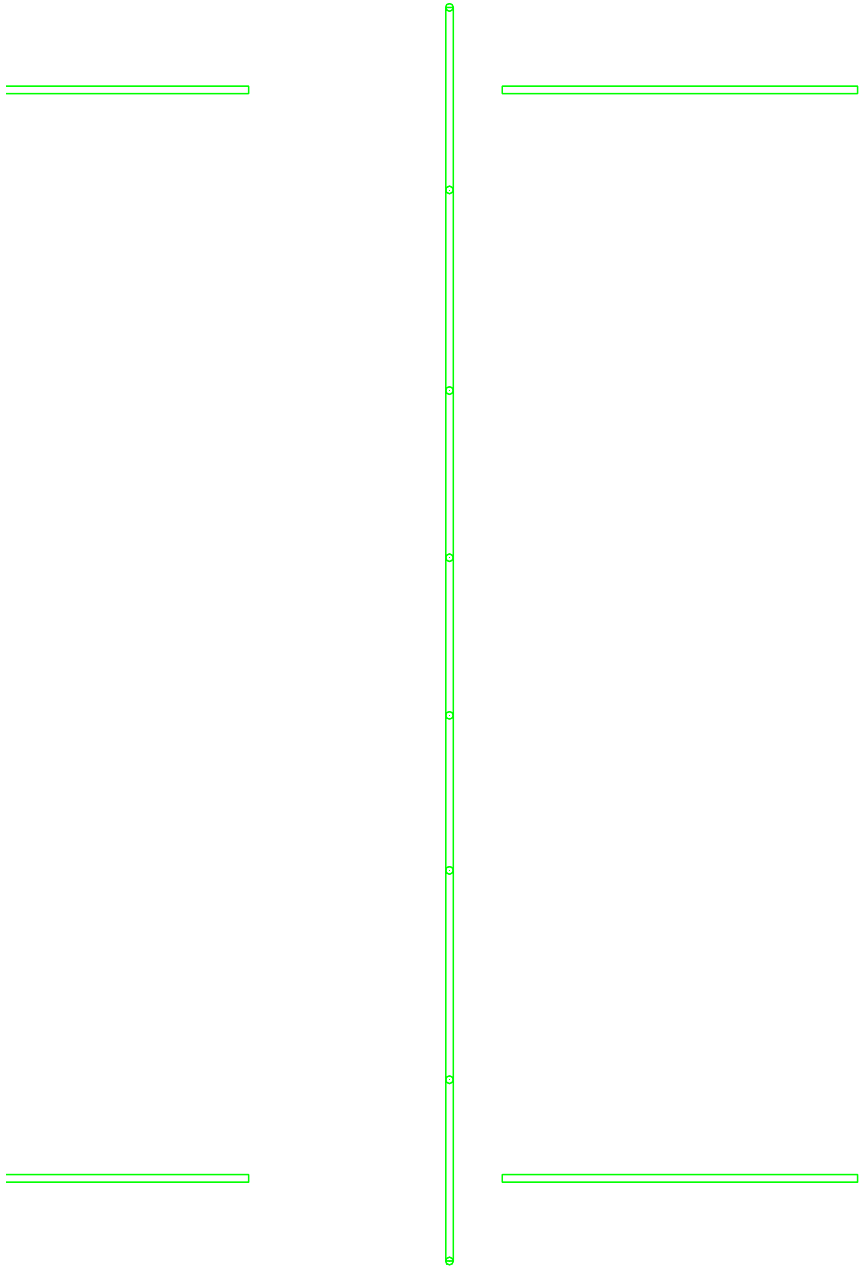
FORESTAGE
 Two 2', four 4' (interchangeable) and 2 curved sections, can be lowered by 0.57m (1'10") max. Steps available with 0.17m (6.75") risers.

GRID
 Height 12m (39'4") to underside
 Maximum flying height 11.4m (37'5")
 Hems A-D flying height 7.75m (25'5")

GET IN DOORS AND TRAPS
 Get-in doors 1.14m x 2.19m (3'8" x 7'2") or 0.76m x 2.04m (2'6" x 6'8"). Staircase should be checked if large pieces of scenery are to be used
 Traps to scene dock below stage, aperture 3.55m x 1.03m (11'7" x 3'4")

STAGE SIZE
 Proscenium Arch Height 3.8m (12'5")
 Proscenium Arch Width 6.67m (21'10")
 Maximum Stage Depth 11.1m (36'5")

ORCHESTRA PIT
 Depth 1.6m (5'3") below stage
 Depth 0.8m (2'9") below auditorium
 Useful width 1.55m (5'1")



NOTES

adc theatre
 PARK STREET - CAMBRIDGE CB5 8AS - TELEPHONE (01223) 359547 - WEBSITE <http://www.adctheatre.com>

LX PLAN SCALE 1:25 (A1) 1:50 (A3)

PRODUCTION	DATES	
	COMPANY	
DIRECTOR	DESIGNER	
LIGHTING DESIGNER	DRAWN	DATE

ADC CAD Model maintained by Eddy Langley - <http://www.eddylangley.net/adc/> - Last updated: Thursday April 14 2022